

Bed Bugs 101

EARLY DETECTION GUIDE

Display in your home and office.

Download more copies of this poster FREE at www.protectabed.com

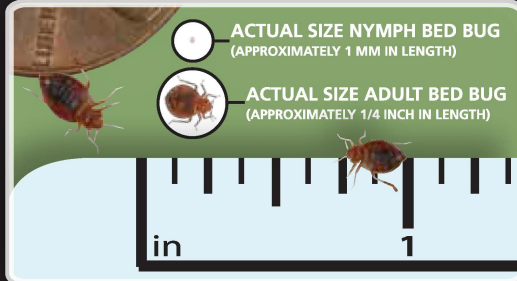
PROTECT·A·BED®

Every Mattress Needs Protection™

IDENTIFY



Bed bugs are a common problem very few people know much about. Anyone can get bed bugs, even in the cleanest of environments.



Bed bugs are parasites that are so small they often go unseen, but their presence can affect sleep, health and hygiene.



People can react to bed bugs differently, but the first sign is often small bites that become inflamed and itchy, like mosquito bites.

LOCATE

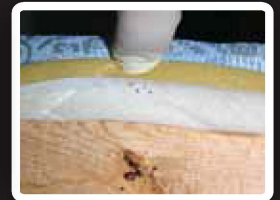
WHERE TO LOOK



Start by inspecting **1 the bed**, including the mattress, box spring, headboard and frame. If there is an infestation, approximately 70% or more of the bed bugs will be found here. Another 23% will be found in furniture **within 5 feet of the bed** or in upholstered furniture. Check under and behind **2 night stands**, as well as along piping and pleats of **3 upholstered furniture**. Another 7% will disperse to other areas such as behind **4 wall hangings**, in **5 curtains and under other furniture**.

WHAT TO LOOK FOR

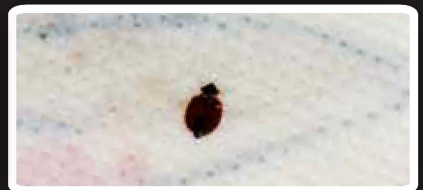
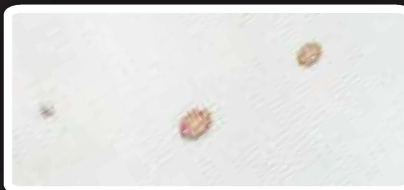
There are often little brown or near-black dots on the mattress seams, on bedding or on the box spring.



Looking even closer, you'll find that bed bugs deposit white eggs and dark fecal matter. Bed bugs will also shed and leave their skin.



There may even be red splotches from a bed bug that fed on blood that was shortly thereafter crushed. Spotting an actual bed bug is also likely.



PROTECT

Mattress encasement is a key tool in eradicating bed bugs from your home and life. Protect-A-Bed® offers a full line of mattress encasements that can help protect you, your family and your mattress from bed bugs. All of our Allerzip® mattress encasements are:

- Bed bug entry, escape and bite proof, thanks to our patented BugLock® with Secure Seal®
- Waterproof on all six sides, keeping your mattress free of stains from spills and other accidents
- Cool and comfortable to sleep on thanks to the Protect-A-Bed® Miracle Membrane®

866.860.9626
www.protectabed.com



PROTECT·A·BED®

Every Mattress Needs Protection™