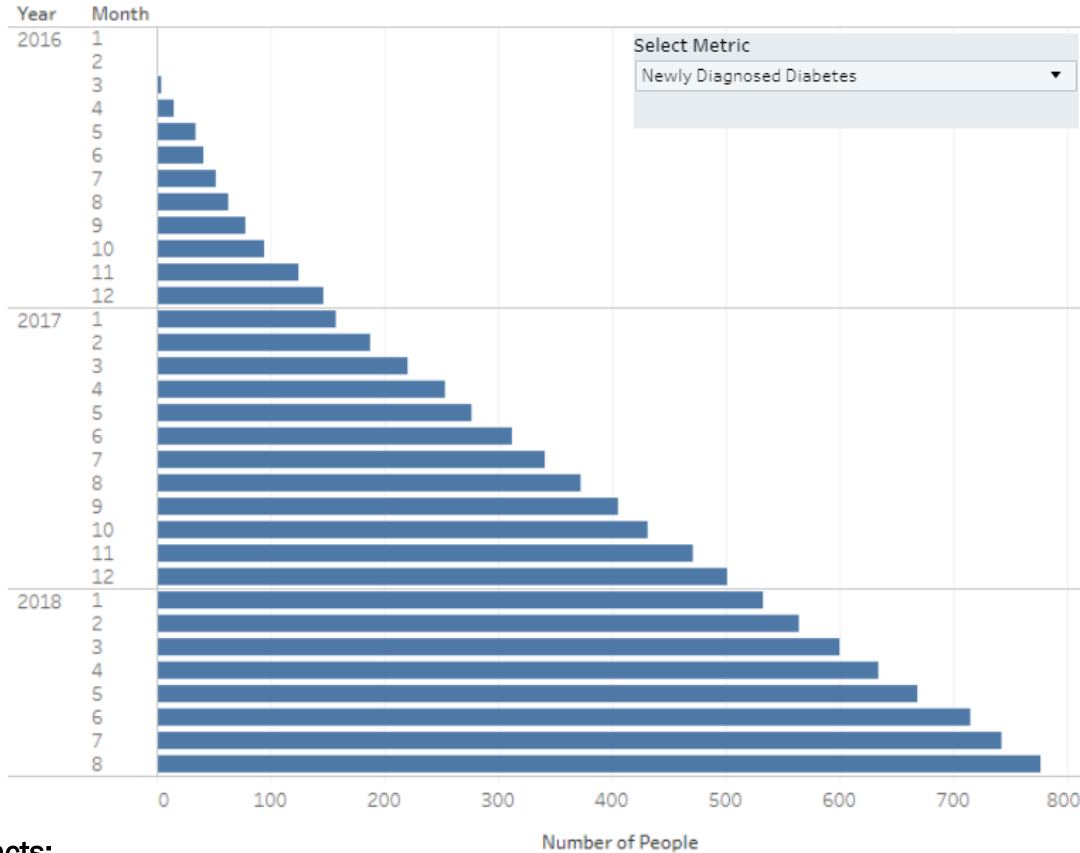




Number of Montana Medicaid Expansion Beneficiaries Diagnosed with Diabetes by Month, Montana 2016-18



Key Facts:

- **9.4%** of Montana population have enrolled in Medicaid Expansion since January, 2016
- **96,656** adults enrolled in Medicaid Expansion as of August, 2018
- **776** adult beneficiaries newly diagnosed and treated for diabetes as of August, 2018
- **32,721** beneficiaries received preventive primary care physician visits as of August, 2018

CONTACT

Chronic Disease Prevention and Health Promotion Bureau  
 1-844-MT-HLT-4-U  
 (1-844-684-5848)  
 ChronicDiseasePrevention@mt.gov

Resources:

For more information on Medicaid Expansion visit:  
<https://dphhs.mt.gov/healthcare/Apply>  
 For more information on the Montana Diabetes Program visit:  
<https://dphhs.mt.gov/publichealth/Diabetes>

Data Source:

<https://dphhs.mt.gov/helpplan/medicaidexpansiondashboard>