

# STI Partner Services in Montana

TALK



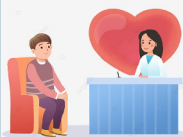
Partner services are offered to:

- People with STIs
- Sexual partners
- People at increased risk of STIs

TEST



TREAT



## Patient and Partner Interview

Partner services includes:

- Interviewing the patient
- Identifying partners of an STI exposure
- Notification of partners and others at risk
- Counseling and linkage to social services
- Referrals for social and medical care



## Clinical Evaluation

Clinical evaluation helps determine:

- Disease staging
- Ensuring appropriate treatment
- Patient and partner follow-up

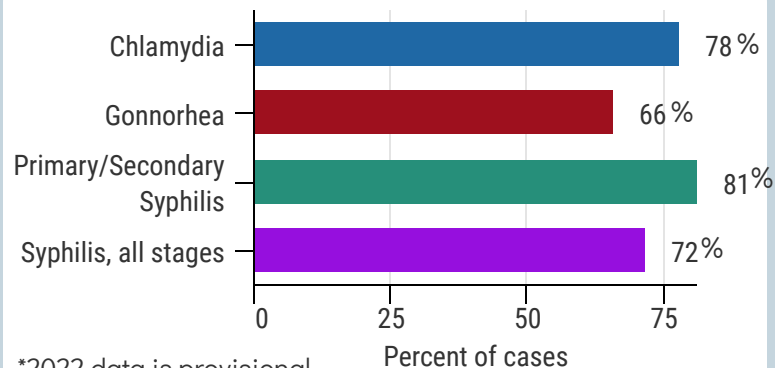
## What is Lost to Follow-up?

Lost to follow-up is when a patient cannot be reached for an interview following an STI diagnosis.

This may happen when a person:

- Does not return phone calls or respond to a letter
- Does not have up-to-date contact information
- Has no phone
- Is unhoused or has other social needs, such as a substance abuse disorder

How is Montana Doing?  
Percent of STI patients with a documented interview, 2022\*



\*2022 data is provisional

## Tools to help expand and enhance partner services

- Work with providers and case managers to help locate and patients/partners
- Use MIDIS\* to document and track patients/partners who are interviewed
- Be ready to assist with other social and health needs
- Explore on-line training and tele-coaching with the University of Montana

\*Montana Infectious Disease Information System



The University of Montana offers tele-coaching and on-line training for public health staff in disease intervention and partner services.

Contact Hannah Tougas at [hannah.tougas@montana.edu](mailto:hannah.tougas@montana.edu)

