



Rabies by the Numbers, Montana, 2017

2

Variants of the Rabies Virus Found Naturally in MT

Bat rabies can be found statewide. Skunk rabies is generally found east of the continental divide, and are more likely to infect a domesticated animal such as dogs, cats, and livestock.

3

Average Number of Deaths Per Year in the United States

Deaths due to rabies are often attributed to lack of awareness of exposures and the need for medical care.

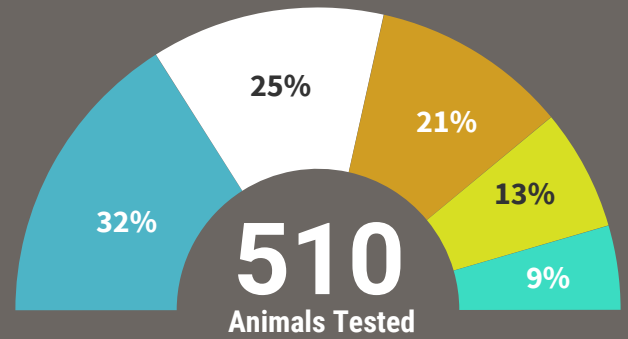
10

Day Observation Period for Cats, Dogs, and Ferrets

Only these animals can be reliably observed for rabies after a bite. According to the CDC, no one in the US has ever developed rabies during the animal's 10 day observation period.

Animals Tested by the Montana Veterinary Diagnostic Laboratory in 2017

2.5% tested positive (13 bats)



● Bats ● Dogs ● Cats ● Other domestic animals ● Other wildlife

Rabies Post-Exposure Prophylaxis (PEP) - Recommendations from Public Health

Public health recommended PEP to be administered to 216 people in 2017 to prevent rabies. Recommendations for PEP were made following known exposures to rabid animals or when exposures to rabies could not be ruled out.

What type of animal exposures were involved with these PEP recommendations?



 45%

Bat exposures, most were exposed to bats in the home during sleep.

 36%

Dog exposures, most were animal bites and the dog could not be found for observation.

 13%

Cat exposures, most were animal bites and the cat could not be found for observation.

21

Years Since the Last Human Death Due to Rabies in Montana

Rabies deaths are preventable, and exposures to mammals capable of carrying rabies is a reportable condition.

35

Days, Median Incubation Period for Rabies in Humans

Rabies is a slow moving virus. This allows time for further investigation and/or testing to rule out rabies when a potential exposure occurs.

 Questions

Contact your primary care provider or local public health office with questions about potential rabies exposures.



MONTANA COMMUNICABLE DISEASE EPIDEMIOLOGY