



# Tuberculosis Surveillance Update — Montana, 2018

This report reflects confirmed tuberculosis cases reported to the Montana Department of Public Health and Human Services (DPHHS) in 2018. This report was prepared by the Tuberculosis Program. Contact Ryan Weight at 406-444-0273 or ryan.weight@mt.gov with questions.

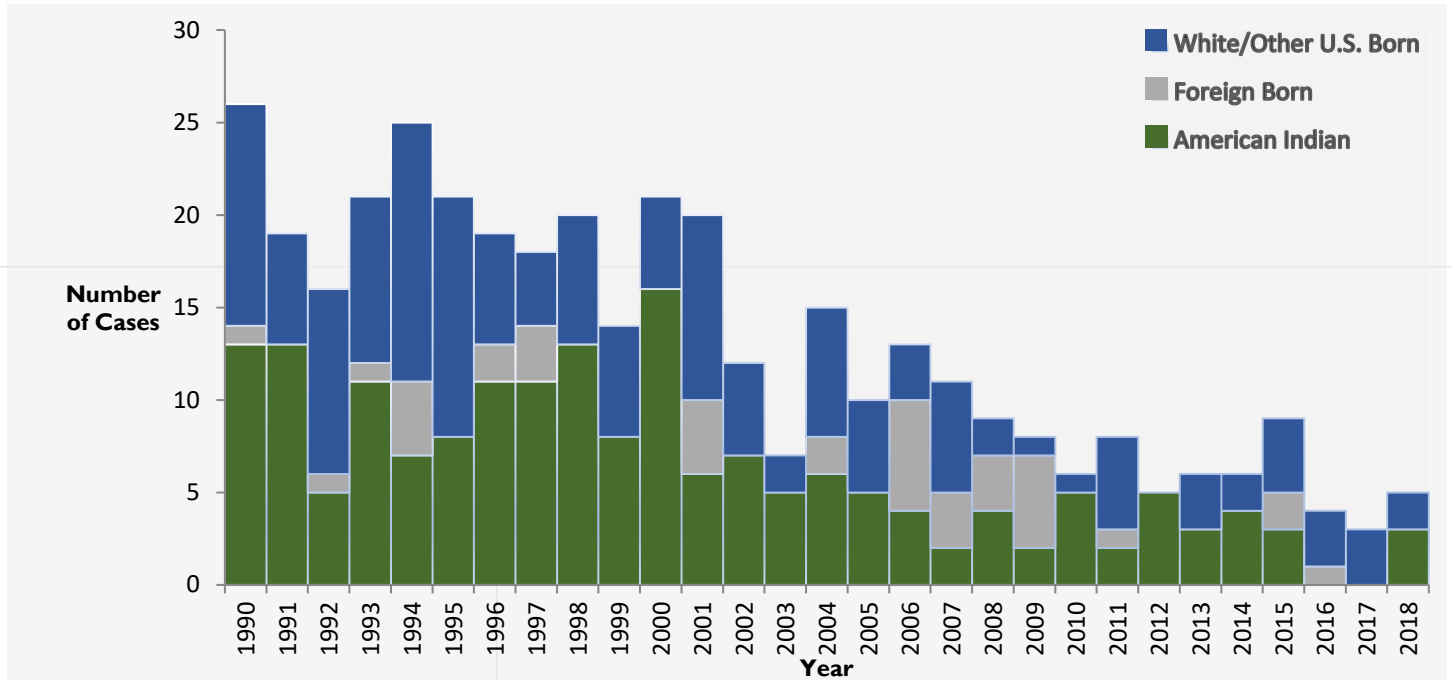
## TB Surveillance Update (Table)

- Five patients with new, active tuberculosis were reported in Montana in 2018, a slight rise compared to the last two years
- Four of the five patients had pulmonary/pleural disease, while one had extrapulmonary ocular TB disease
- None of the patients had drug-resistant TB
- Jurisdictions of residence for the TB cases included Northern Cheyenne, Flathead, Blackfeet, Missoula, and Ft. Peck
- Patient risk factors included: TB infection (LTBI) conversion, extended travel outside of US to TB endemic country
- One patient received a diseased organ from a transplant
- More than 300 contacts were identified and required follow-up testing.
- One close contact converted and received appropriate treatment.
- All patients were U.S. born

## TB Trends (Figures 1 and 2)

- Incidence rates of TB in Montana and the United States have been decreasing; the 2018 MT rate (0.5 cases per 100,000 population) was 5.6x lower than the 2017 U.S. rate (2.8 cases per 100,000 population; 2018 U.S. rate was unavailable at the time of this report)
- During the 1990s, an average of 10 cases per year, approximately 2.4 cases per 100,000 population, were reported in Montana (range: 26 cases in 1990 to 14 cases in 1999)
- During the past 10 years, an average of 6 cases per year, approximately 0.6 case per 100,000 population, were reported (range: 3 to 9 cases)
- During the most recent five-year period (2014–2018) an average of 5.4 cases per year, or 0.54 cases per 100,000 population, were reported in Montana
- TB cases among American Indians have declined from an average of 10 cases per year in the 1990s to 4.3 cases per year from 2000–2018; during 2016 and 2017 there were no reported American Indian cases, with 3 in 2018

FIGURE 1. REPORTED ACTIVE TUBERCULOSIS CASES BY RACE — MONTANA, 1990–2018



Data source: DPHHS Montana Infectious Disease Information System

FIGURE 2. TUBERCULOSIS INCIDENCE RATE — MONTANA AND UNITED STATES, 2005–2018

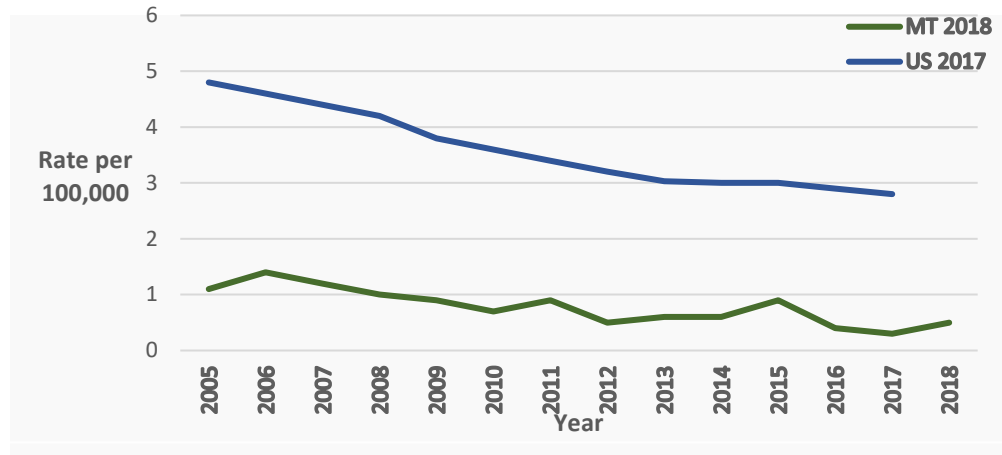


TABLE. TUBERCULOSIS CASE SUMMARY—MONTANA, 2016-2018

Characteristics	2016	2017	2018
<b>New TB Cases</b>	4	3	5
<b>Incidence Rates (per 100,000)</b>			
Montana	0.4	0.3	0.5
<b>Sex</b>			
Male	3	2	4
Female	1	1	1
<b>Age at diagnosis (years)</b>			
<5	-	-	-
5-14	-	-	-
15-24	1	-	1
25-44	1	-	1
45-64	2	1	2
≥65	-	2	1
<b>Race, Ethnicity</b>			
Non-Hispanic, White	3	3	2
Non-Hispanic, American Indian	-	-	3
Non-Hispanic, Other	1	-	-
<b>Site of Disease</b>			
Pulmonary/Pleural	4	3	4
Extrapulmonary only	-	-	1
Pulmonary & Extrapulmonary	-	-	-
<b>Drug Resistance</b>			
No resistance	2*	3	5*
Isoniazid resistance	-	-	-
Multiple-drug resistance	-	-	-
<b>Country of Origin</b>			
U.S. born	3	3	5
Foreign born	1	-	-

\*One or more patients met the definition of a clinical case but were culture-negative so susceptibility testing could not be completed  
Data source: DPHHS Montana Infectious Disease Information System