

Goals of today's discussion

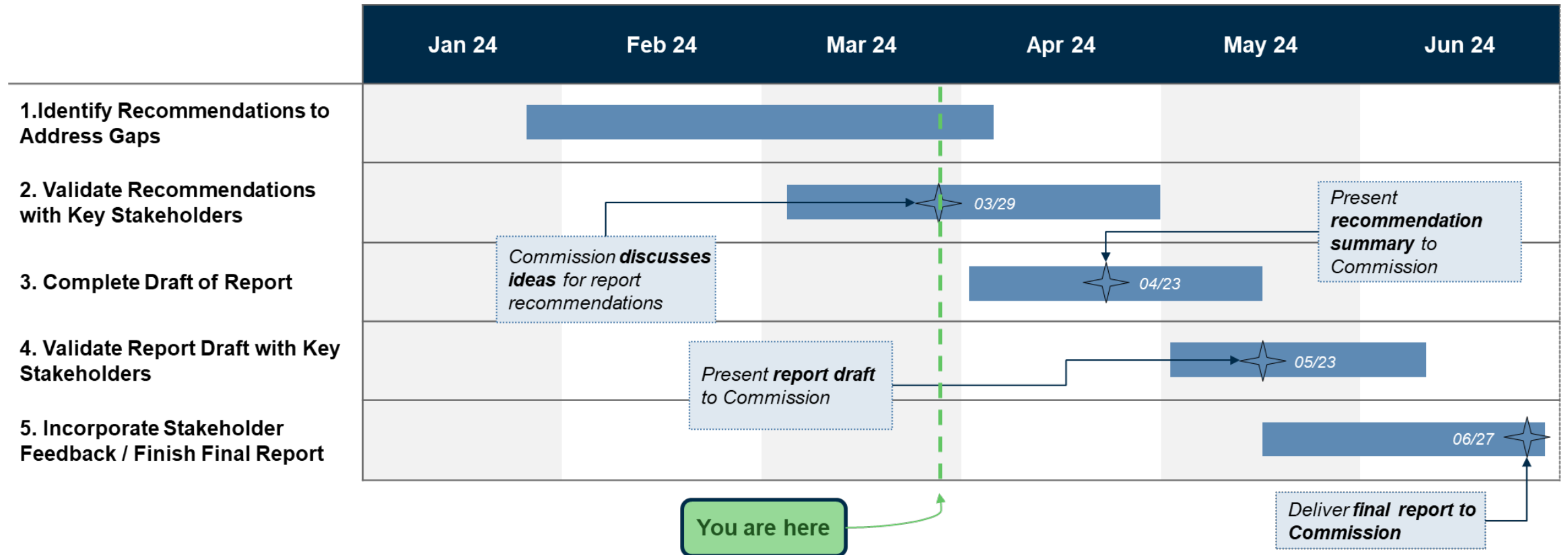
- Reflect on the information gathered by the Commission thus far; and
- Brainstorm potential recommendations for inclusion in the final BHSFG report.

Next steps after today

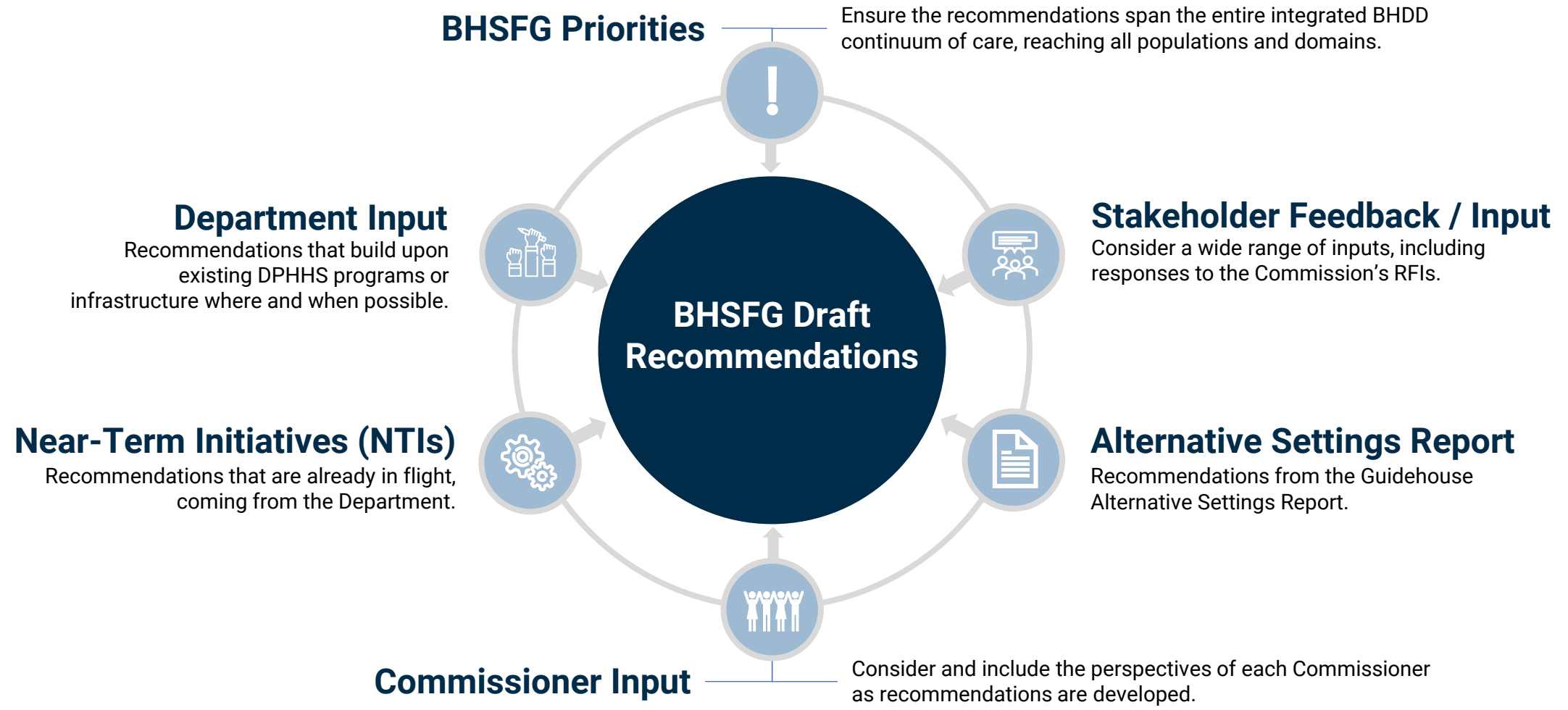
- Commissioners share additional ideas and feedback with DPHHS; and
- DPHHS prepares a presentation of recommendations for the Commission to review at the next Commission meeting, **on April 23rd, 2024.**



BHSFG Recommendations | Recommendation Development Timeline



BHSFG Recommendations | Summary of Approach



BHSFG Recommendations | Themes

As the Commission and DPHHS conduct their work, the following three themes are emerging as ways to organize and structure potential BHSFG recommendations.



Workforce

Workforce impacts each service, program, and initiative. It is the constraint that must be overcome for other recommendations to be possible. Workforce recommendations may focus on growing, retaining, improving, and effectively deploying Montana's human capital.



Continuum Capacity

Armed with recommendations to ensure a highly trained and engaged workforce, plus recommendations for managing services, Montana's behavioral health and developmental disabilities systems must finally ensure that the right continuum capacity is available.



Case Management

Case management is the bridge across programs and acuity, and the function that ensures that all programs and services reach their intended targets. Recommendations may focus on identifying the right case management models and that they are built to improve health outcomes.

